

# Educator's Guide



LEARNING OPPORTUNITIES IN NATURE, WILDLIFE  
AND THE CULTURAL HISTORY OF CENTRAL ILLINOIS

2011-2012

Macon County Conservation District  
Decatur, IL

**Macon County Conservation District** is an extension of your classroom. Our nature programs for all grade levels complement your science curriculum with hands on learning. Our living history programs teach children from pre-kindergarten through college about pioneer life on the Illinois prairie.

Tours are scheduled at Rock Springs Nature Center and can also be held at the other conservation areas including: Griswold, Sand Creek, Friends Creek, and Fort Daniel. Programs can also be offered right in your own classroom. All tours, presentations, and programs are correlated with Illinois State Learning Standards (SLS).

## GENERAL INFORMATION

### WHAT TO WEAR

We advise sturdy shoes, no sandals, socks, long pants and long sleeves for participation in outdoor programs. Gloves, hats and boots are recommended for damp and winter weather.

### VISITING ON YOUR OWN

We encourage you to bring your class to any of the Conservation District sites throughout the year. There is no fee to use the Rock Springs Nature Center or any of our trails. We simply ask that you call ahead and let us know when you plan to visit.

### SHILLING LIBRARY AT ROCK SPRINGS NATURE CENTER

The library has environmental education, history, storytelling and children's sections as well as a vertical file of nature information, a good selection of field guides and books on various nature topics. Most of these resources may be checked out. Call for library hours.

### TIPS FOR A "GREENER" FIELD TRIP

Don't just learn about nature on your field trip, do your part to take care of it with these green field trip ideas.

- 1. "Bus" or car pool.** If traveling by school bus, encourage another class from your school to share the bus. We can accommodate more than one class at a time if you book early. If parents are coming in their own cars to chaperon or if they are bringing their children, encourage them to car pool too.
- 2. Pack a green lunch.** Many parents use single use plastic bags or prepackaged lunches. This is convenient, but expensive and not very green. Encourage parents to pack lunches in reusable containers and send drinks in reusable bottles. For a really "green" lunch, buy locally grown foods, use cloth napkins or a bandana. Make this a contest to see which student has the greenest lunch.
- 3. Recycle everything that can be.** We have bins for aluminum and plastic bottles at our pavilions and in the nature center. Packaging from many food items can be sent to TerraCycle. This company makes resalable items (backpacks, totes and much more) from certain food wrappers, and other "garbage." Check out [www.terracycle.net](http://www.terracycle.net) to learn more.

Programs and opportunities are available for schools, home-school groups, after school programs and organized youth groups such as scouts, religious groups, day care centers, and summer camps.

## RESERVATIONS

Reservations for all Macon County Conservation District programs and services may be made Monday through Friday from 8:00 a.m. to 5:00 p.m. by calling 217-423-7708. More detailed information can also be found at the Macon County Conservation District website: [www.maconcountyconservation.org](http://www.maconcountyconservation.org).

Reserve well in advance to secure the dates you want.

Special presentations and the Mobile Nature Center can travel to your classroom. If you are interested in saving money, check out the special programs that will travel to you, beginning on page 11. Additional classes at your school can make a reservation for a discounted rate if the program is scheduled on the same day as the others in the school building.

Rain dates are not provided, however, we can often work with your group indoors if the weather prohibits outdoor programming.

If you need to cancel your reservation for any reason, please contact us as soon as possible.

Pavilions must be reserved. We do not have an indoor lunchroom, but can often accommodate groups indoors during bad weather. **For more information please contact us:**

**Macon County Conservation District**  
**3939 Nearing Lane • Decatur, IL 62521 • 217-423-7708**  
**[mccd@maconcountyconservation.org](mailto:mccd@maconcountyconservation.org)**  
**[www.maconcountyconservation.org](http://www.maconcountyconservation.org)**



# SEASONAL TOURS AND PROGRAMS

There is a minimum fee of \$10.00 for each tour or program. One adult, including the teacher, for each 10 students will be admitted free of charge. Chaperones are discouraged from bringing younger children.



## FALL

### AWARENESS HIKES

These hikes emphasize sensory awareness and appreciation of nature. All hikes focus on discovery and the wonder of the natural world.

Fees for all Awareness Hikes:

Macon County Schools \$.50 per student

Non-school youth groups and Out of County Schools \$1.00 per student

### SENSORY HIKE

Colors, shapes, touch, sounds and smells of nature are experienced in the autumn woods and prairies.

**Who:** Preschool

**When:** Sept. through mid-Nov.

**Time:** 45 min.

**SLS:** 8AEC, 9AECa, 12AECa, 12BEC, 12EECa, 12FEC

## CHANGES – SEASONS

Plants and animals are preparing for what comes next. We will explore the autumn woods to find clues of their preparation.

**Who:** Kindergarten

**When:** Sept. through mid-Nov.

**Time:** 45 min. – 1 hour

**SLS:** 11AKa, 12AKa & b, 12BK, 12CK, 12EKa, 12FK, 13BKa

## BUGS, BUGS, BUGS

So many bugs, so little time! We will meet a few on our hike and look at what makes a bug a bug.

**Who:** K through 3rd grade

**When:** Sept. through mid-Oct.

**Time:** 1 hour

**SLS:** 11AKa & c, 11BKa, 12AKa & b, 12BK, 12CK, 12DK, 13BKa, 12A, 1a, 1b, 12 B, 1a, 1b



## NATURE'S HITCHHIKERS – SEEDS

Take a hike to see what hitches a ride. Look at seeds close-up and aid in seed dispersal.

**Who:** 1st through 3rd grade

**When:** Sept. through mid-Nov.

**Time:** 1 hour

**SLS:** 12A, 1a, 1b, 12B, 1a, 1b

## POND LIFE

Hike to a pond to look for turtles, frogs and other critters that live in or around the water.

**Who:** 1st through 3rd grade

**When:** Sept. through mid-Nov.

**Time:** 1 hour

**SLS:** 12A, 1a, 1b, 2a, 12B, 1a, 1b, 2a, 2b

## PRAIRIE PATHS

Experience a prairie in all its glory. Learn about “turkey foot and Indian grass,” how the Native Americans and pioneers felt about the prairie and what happened to it.

**Who:** 3rd grade

**When:** Sept. through mid-Nov.

**Time:** 1 hour

**SLS:** 12A, 1a, 1b, 12B, 1a, 1b, 16E, 1(us), 2a(us), 2c(us)

## DISCOVERY PROGRAMS

These programs include an indoor presentation and hike. All programs are 1.5 to 2 hours in length. **Grades 4 through 6. Programs can be adapted for other grade levels.**

Fees for all Discovery Programs, except where indicated:

Macon County Schools \$1.00 per student

Non-school youth groups and Out of County Schools \$1.50 per student

## MEET THE CREEPY CRAWLIES

Invertebrates, emphasizing insects

**When:** Sept. through mid-Oct.

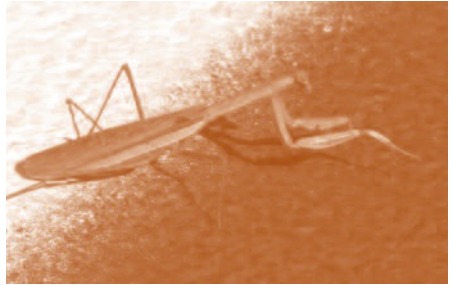
**SLS:** 12B, 2a, 2b

## MOTHER NATURE'S NEIGHBORHOOD

Ecology and natural communities

**When:** Sept. through mid-Nov.

**SLS:** 12B, 2a, 2b, 12E, 2c



## BIG GREEN MACHINE

Green plants, emphasizing seeds

**When:** Sept. through mid-Nov.

**SLS:** 12A, 2a, 12B, 2a, 2b

## A SKELETON IN THEIR CLOSET

Vertebrates, emphasizing mammals

**When:** Sept. through mid-Nov.

**SLS:** 12A, 2a 12B, 2a, 2b

## A VISIT TO HOMESTEAD PRAIRIE FARM

Hike through woods and prairies, experience life at an 1860s living history farm – emphasizes change in local environment and lifestyle. Limited to 30 students.

**When:** Sept. through mid-Nov.

**Time:** 2 hours

**Fee:** Macon County Schools \$1.50 per student

Non-school youth groups and Out of County Schools \$2.00 per student

**SLS:** 12B, 2a, 2b 15A, 2b, 15B, 2a, 16B, 2d(us), 16C, 2b(us), 2c(us), 16D, 2a(us), 2b(us), 2c(us), 3b(us), 16D, 2(w), 17A, 2a, 2b, 17B, 2a, 2b, 17C, 2a, 2b, 2c, 7D, 2b, 18C, 2a

# OTHER FALL PROGRAMS

Fees for Other Fall Programs:

Macon County Schools \$1.50 per student

Non-school youth groups and Out of County Schools \$2.00 per student

## MEET THE TROBAUGHS

Learn about life in the past from stories of the Trobaugh children. Tour the 1860s house they lived in. Limited to 30 students

**Who:** K through 3rd grade

**Time:** 1 hour

**ALS:** 4AKa & b, 5BK, 14AKb, 15BK, 16AKb, 17CK, 17DK, 19AKa & d, 16A, 1a, 1b, 16C, 1b(us), 16C, 1a(w), 1b(w), 16E, 1(us), 17D, 1

## BETHEL SCHOOL DAYS

A turn-of-the-century, one-room school experience at Bethel Schoolhouse. Adapted to the appropriate learning level for your group.

**Who:** K through 8th grade

**When:** Late Sept. through early Nov.

**Where:** Friends Creek Conservation Area, Argenta

**Time:** 1 hour

**SLS:** 6AKa&b, 14Kb, 16AKb, 14Kb, 16AKb, 17DK, 19AKa & d, 21BK, 16A, 1a, 1b, 1c, 16B, 1a(us), 1b(us), 16C, 1a(w), 16D, 2b(us), 3a(us), 3b(us), 16E, 2b(us), 3b(us)

## GEOLOGY – ARCHAEOLOGY

Learn about the geologic history of Illinois with emphasis on glaciations and the humans who inhabited Central Illinois as the last glacier melted. Limited to 35 students.

**Who:** 4th through 8th grade

**When:** Sept. through Oct.

**Time:** 2 hours

**Where:** Griswold Conservation Area, Blue Mound

**SLS:** 12B, 2a, 2b, 3a, 3b, 12E, 2a, 2b, 3a, 3b, 16D, 2(w), 16E, 2a(w), 2b(w), 17A, 2a, 2b, 17B, 2a, 2b, 17C, 2a, 2b, 2c, 3a, 3b, 17C, 2a, 2b, 2c, 17D, 2b

## PONDS AND WETLANDS

Discover the importance of wetlands through demonstrations and hands on activities. We will hike to a pond and a wetland, collect some critters and examine them back in the lab.

**Who:** 3rd through 8th grade

**When:** Sept. through Oct.

**Time:** 2 hours

**SLS:** 12A, 2a, 12B, 2a, 2b, 3a, 3b, 13b, 2e, 2f, 3e, 16E, 2a(us), 3a(us), 3b(us), 3c(us), 17B, 2b, 3a, 3b, 17C, 2c

# WINTER

## ANIMALS IN WINTER

This program covers animal activity in winter and includes a presentation and hike to look for animal tracks and other evidence that not all animals hibernate all winter.

Adapted to appropriate age.

**Who:** P through 8th grade

**When:** Nov. through Feb.

**Time:** 45 min. – 1.5 hours

**Fee:** Contingent on type of activity and length of program

**SLS:** 1BECb, 1CECb, 8AEC, 12AECa, 12BEC, 12EECa, 12FEC, 11AKa & c, 11BKa, 12AKa & b, 12BK, 12CK, 12DK, 12EKa, 12FK, 13BKa, 12A, 1a, 1b, 12B, 1a, 1b, 2a, 2b, 3a, 3b

## HOLIDAYS FOR THE BIRDS

Children will learn about birds at our “Window on Wildlife” and make pine cone bird feeders to hang on the trees and shrubs around the Nature Center, or to take back to their school.

**Who:** P through 2nd grade

**When:** Late Nov. through early Dec.

**Time:** 45 min.

**Fee:** Macon County Schools \$1.50 per student

Non-school youth groups and Out of County Schools \$2.00 per student

**SLS:** 1CECb, 4AEC, 12AECa, 12BEC, 12EECa, 12FEC, 12AKa and b, 12BK, 12CK, 12EKa, 12FK

## HOLIDAYS ON THE PRAIRIE

Students will learn about Christmas of the past at the Homestead Prairie Farm and early Christmas traditions in this hands-on program.

**Who:** 1st and 2nd grade

**When:** Late Nov. through early Dec.

**Time:** 1 hour

**Fee:** Macon County Schools \$1.50 per student, Out of County Schools \$2.00 per student

**SLS:** 16a, 1a, 1b, 1c, 16B, 1(w), 16C, 1b(us), 16D, 1(w), 16E, 1(us), 17C, 1a, 17D, 1



# SPRING

## AWARENESS HIKES

These hikes emphasize sensory awareness and appreciation of nature. The hikes stress a different concept for each age level. All hikes accentuate discovery and wonder of the natural world. Offered April through May. See program descriptions listed under FALL on pages 2 and 3.

Fees for all Awareness Hikes, except where indicated:

Macon County Schools \$.50 per student

Non-school youth groups and Out of County Schools \$1.00 per student

## SENSORY HIKE

**Who:** P

**Time:** 45 min.

**SLS:** 8AEC, 9AECa, 12AECa, 12BEC, 12EECa, 12FEC

## CHANGES – SEASONS

Life is awakening for spring after a long winter. Students will discover who is doing what on the trails this spring.

**Who:** K

**Time:** 45 min.– 1 hour

**SLS:** 11AKa, 12AKa & b, 12BK, 12CK, 12EKa, 12FK, 13BKa

## NATURE'S HOMES

Everything needs a home, a place to live. Plant and animal homes will be explored.

**Who:** 1st grade

**Time:** 1 hour

**SLS:** 12A, 1a, 1b, 12B, 1a, 1b

## POND LIFE

**Who:** 1st through 3rd grade

**Time:** 1 hour

**SLS:** 12A, 1a, 1b, 2a, 12B, 1a, 1b, 2a, 2b

## WHAT'S FOR DINNER?

Animals in the wild must be able to find their own food. Students will have a chance to look for clues to food webs in an “outdoor food market.”

**Who:** 2nd through 3rd grade

**Time:** 1 hour

**SLS:** 12A, 1a, 1b, 2a, 12B, 1a, 1b, 12B 2a, 2b



## DISCOVERY PROGRAMS

These programs include an indoor presentation and hike. All programs are two hours in length. **Grades 4 through 6.** Programs can be adapted for other grade levels.

Fees for all Discovery Programs:

Macon County Schools \$1.00 per student

Non-school youth groups and Out of County Schools \$1.50 per student

## MOTHER NATURE'S NEIGHBORHOOD

Ecology and natural communities

**When:** April/May

**SLS:** 12B, 2a, 2b 12E, 2c

## BIG GREEN MACHINE

Green plants, emphasizing tree identification and wildflowers

**When:** April/May

**SLS:** 12A, 2a, 12B, 2a, 2b

## A SKELETON IN THEIR CLOSET

Vertebrates, emphasizing mammals

**When:** April/May

**SLS:** 12A, 2a, 12B, 2a, 2b

# OTHER SPRING PROGRAMS

Fees for the following programs are as follows, except where noted:

Macon County Schools \$1.50 per student

Non-school youth groups and Out of County Schools \$2.00 per student

## MEET THE TROBAUGHS

See program description listed under FALL on page 5.

**Who:** K through 3rd grade

**Time:** 1 hour

**SLS:** 4AKa & b, 5BK, 14AKb, 15BK, 16AKb, 17CK, 17DK, 19AKa & d, 16A, 1a, 1b, 16C, 1b(us), 16C, 1a(w), 1b(w), 16E, 1(us), 17D, 1

## BETHEL SCHOOL DAYS

See program description listed under FALL on page 5

**Who:** K through 8th grade

**When:** late April through early May

**Time:** 1 hour

**Where:** Friends Creek Regional Park, Argenta

**SLS:** 6AKa&b, 14Kb, 16AKb, 16AKa & b, 14Kb, 16AKb, 17DK, 19AKa & d, 21BK, 6A, 1a, 1b, 1c, 16B, 1a(us), 1b(us), 16C, 1a(w), 16D, 2b(us), 3a(us), 3b(us), 16E, 2b(us), 3b(us)

## PONDS AND WETLANDS

See program description listed under FALL on page 5

**Who:** 3rd through 8th grade

**When:** April/May

**Time:** 2 hours

**SLS:** 12A, 2a, 12B, 2a, 2b, 3a, 3b, 13b, 2e, 2f, 3e, 16E, 2a(us), 3a(us), 3b(us), 3c(us), 17B, 2b, 3a, 3b, 17C, 2c

## GEOLOGY/ARCHAEOLOGY

See program description listed under FALL on page 5

**Who:** 4th through 8th grade

**When:** April/May

**Time:** 2 hours

**Where:** Griswold Conservation Area, Blue Mound

**SLS:** 12B, 2a, 2b, 3a, 3b, 12E, 2a, 2b, 3a, 3b, 16D, 2(w), 16E, 2a(w), 2b(w), 17A, 2a, 2b, 17B, 2a, 2b, 17C, 2a, 2b, 2c, 3a, 3b, 17C, 2a, 2b, 2c, 17D, 2b

# ANYTIME

Fees for the following programs are as follows, except where indicated:

Macon County Schools \$1.50 per student

Non-school youth groups and Out of County Schools \$2.00 per student

## BIRDS OF A FEATHER

Have fun on this interactive field trip. Take a bird nest quiz, do a beak adaptation activity and/or use our binoculars on a bird hike.

**Who:** 3rd through 8th grade

**Time:** 1 – 2 hours

**SLS:** 12B, 2a, 2b, 3a, 3b, 13B, 2e, 2f, 3e

## HOMESTEAD PRAIRIE FARM TOUR

Living history tour of an 1860s farmhouse and dooryard.

**Who:** 3rd through college

**Time:** 30 min. – 1 hour

**SLS:** 15A, 2b, 15B, 2b, 15C, 21, 2b, 16A, 3c, 16B, 4(us), 5b(us), 16C, 2b, 2c, 3b, 4a(us), 4b(us), 5b(us), 16D, 2a, 2b, 3a, 3b, 5(us), 16E, 2a(us), 2b(us), 2c(us), 3b(us), 3c(us), 4b(us), 5a(w), 17B, 2a, 2b, 3b, 17C, 2a, 2b, 2c, 3a, 3c, 4a, 4b, 4c, 17D, 2b, 3a, 3b, 4, 18C, 2

## ILLINOIS PRE-HISTORY

This program covers Illinois from Paleo to historic Native Americans followed by a one-hour, hands-on archaeology lab simulation. Limited to 30 students.

**Who:** 5th through 8th grade

**Time:** 2 hours

**SLS:** 13A, 2c, 3c, 4c, 13B, 2a, 2c, 16A, 3c, 16B, 3d(w), 16C, 3b(w), 17C, 2b, 2c, 3a, 17D, 2b

## FIELD CLASSES AND OUTDOOR SCHOOL

Let us work with you to provide a program tailored to your needs.

**Who:** 7th through 12th grade

**Time:** TBD

**Fee:** Contingent on type of activity and length of program

**SLS:** Determined by subject(s)



# SPECIAL PRESENTATIONS

## YOUR PLACE OR OURS

Let us bring a program to you with the following special presentations from our Mobile Nature Center. These programs may also be scheduled at Rock Springs Nature Center. Presentations are listed by age appropriateness with youngest first. Fees for Special Presentations at Rock Springs Nature Center, all groups \$1.00 per student.

**In your classroom: Macon County Schools \$30.00 per class up to 30 students. \$25.00 each additional class that day.**

**Out of County \$35.00 per class up to 30 students. \$30.00 each additional class that day, plus \$.50 per mile round trip. \$10.00 surcharge for trips more than 100 miles round trip.**

## NATURE

### DISCOVERING DINOSAURS

Children are fascinated by dinosaurs. Children will examine replicas of a dinosaur track, skull, egg, tooth and more. Learn the “dinosaur chant.” Story time is also available for younger children.

**Who:** P through 2nd grade. Can be adapted for older groups.

**Time:** 30 min. – 1 hour

**SLS:** 1BECb, 1CECb, 4AEC, 12AECa & b, 12BEC, 4AKa & b, 12AKa & b, 12CK, 16AKb, 2A, 1a, 1b, 2a, 2b, 12B 1a, 1b, 2a, 2b, 16A, 1a.

### FROG MUSIC

Children will meet live amphibians, make a puppet and enjoy an interactive story while learning about frogs and toads.

**Who:** P through 3rd grade

**Time:** 1 hour

**SLS:** 4AEC, 9AEC, 11AECa, 12AECa, 12BEC, 19AECb, 11AKa, 12AKa, 12BK, 12CK, 12A, 1a, 1b, 2a, 12B, 1a 1b, 2a, 2b, 13B, 2e, 2f

## THE UN-LOVABLES

This presentation focuses on animals that are not “cute” or “cuddly”. In fact, some of us might even say “YUK!”. Students will learn the truth about these misunderstood members of the animal world and the important role they play.

**Who:** P through 8th grade

**Time:** 30 min. – 1 hour

**SLS:** 4AEC, 9AEC, 11AECa, 12AECa, 12BEC, 11AKa, 12AKa, 12BK, 12CK, 12A, 1a,1b, 2a, 12B, 1a,1b, 2a, 2b, 3a, 3b, 4a, 4c, 5a, 16E, 1(w)

## WHOO GOES THERE? OWLS

Children will learn about the habits and habitats of native owls. A craft is available for younger students. For the older students, dissection of owl pellets is offered for an extra fee of \$2.00/student. Note—no live owls.

**Who:** P through 12th grade

**Time:** 45 min. – 1 1/2 hours

**SLS:** 4AEC, 9AEC, 11AECa, 12AECa, 12BEC, 19AECb, 11AKa, 12AKa, 12BK, 12CK, 12A, 1a, 1b, 2a, 12B, 1a, 1b, 2a, 2b, 3a, 3b, 4a, 4c, 5a

## THE BUZZ ABOUT BEES

Students will learn the important role bees play in our life - from making honey to pollinating food crops. The difference between bees and wasps will also be highlighted. Content adapted to the age group. For older groups, information on native bees and honey bee diseases will be included.

**Who:** P through college

**Time:** 30 min. – 1 hour

**SLS:** 1BECb, 1CECb, 4ACE, 5BEC, 5CEC, 6AECb, 11AECa, 12AECa, 12BEC, 12FEC, 13BECa, 31AECb, 5DK, 11AKa, 12BK, 12DKa, 12FK, 12A, 1b, 1a, 12B, 1a, 1b, 2a, 2b, 3a, 3b, 4a, 5a, 5b, 15B, 2a, 2b, 15B, 4b, 16E, 3c(US), 4a(w), 16F, 5b(w)

## REPTILIAN ROUNDUP

Meet a real snake to find out what they are really like. Live turtles and snakes help students learn the true nature and value of these creatures.

May be adapted for various age groups.

**Who:** P through college

**Time:** 30 min. – 1 hour

**SLS:** 4AEC, 9AEC, 11AECa, 12AECa, 12BEC, 11AKa, 12AKa, 12BK, 12CK, 12A, 1a, 1b, 2a, 12B, 1a, 1b, 2a, 2b, 3a, 3b, 4a, 4c, 5a 16E, 1(w)



## FOREST, FOREST, WHERE IS THE FOREST?

Students participate in a skit to “build” a forest and then observe the effects as pioneers move in and cut the trees to build their community.

**Who:** K through 6th grade

**Time:** 30 – 45 min.

**SLS:** 12AKa & b, 12BK, 14AKb, 16AKb, 17CK, 17DK, 12EKb, 12B, 1a, 1b, 2a, 13B, 1d, 1e, 2d, 2e, 2f, 16E, 1(us), 2a(us), 2c(us), 3c(us), 3b(us)

## GOING BATTY

Focusing on Illinois bats, children learn truth from myth about these fascinating mammals. A variety of activities will entertain and educate the students.

Note—no live bats.

**Who:** K through 12th grade

**Time:** 30 min. – 1 hour

**SLS:** 11AKa, 12AKa, 12BK, 12CK, 12A, 1a, 1b, 2a, 12B, 1a, 1b, 2a, 2b, 13B, 2e, 2f

## ILLINOIS MAMMALS

Learn facts about the life histories of common and not so common Illinois mammals through examination of pelts, skulls, tracks and scat. Can be tied to Illinois history during the French fur trading era.

**Who:** K through 12th grade

**Time:** 45 min. – 1 hour

**SLS:** 11AKa, 12AKa, 12BK, 12CK, 12A, 2a, 2b, 3c, 12b, 2a, 2b, 3a, 3b, 4a, 4b, 5a, 5b, 13B, 2e, 2f, 3d, 3e, 16C, 3a, 4a, 16D, 2a, 3a, 3b, 16E, 2a(us), 2c(us), 3a(us), 2a(w), 4b(w), 17C, 2c, 5b

## SYMBOLS OF OUR STATE

A quick look at Illinois’ natural history through symbols which were chosen by school children to represent our state. Includes the state tree, bird, wildflower, mammal, insect, prairie grass, fish, amphibian, reptile, fossil and mineral.

**Who:** 1st through 6th grade

**Time:** 45 min. – 1 hour

**SLS:** 12A, 1a, 1b, 2a, 12B, 1a, 1b, 2a, 2b, 3a, 3b, 16E, 1(us), 2a(us), 3b, 3c

## LET’S ROCK

Learn the basics of rocks and minerals and their uses in our everyday life. Program also includes a look at fossils.

**Who:** 2nd through 12th grade

**Time:** 1 hour

**SLS:** 12E, 1a, 2a, 2b

## A TRIP THROUGH TIME – GEOLOGY OF ILLINOIS

Students will take an imaginary trip through time to explore the geologic history of Illinois. We will discover warm tropical seas, dark muddy swamps with giant insects and the ice age.

**Who:** 3rd through 12th grade

**Time:** 45 min. – 1 hour

**SLS:** 12E, 2a, 2b, 3a, 3b, 4a, 4b, 5

## WILD AND WONDERFUL WOLVES

Are Little Red Riding Hood and The Three Little Pigs really presenting an accurate story? Learn about the history of wolves and how people view these animals today.

**Who:** 3rd through 12th grade

**Time:** 45 min. – 1 hour

**SLS:** 12A, 2a, 2b, 12B, 2a, 2b, 3a, 3b, 4a, 5a, 5b, 13B, 2e, 2f, 3d, 3e, 17C, 2a, 5a, 5b, 18A, 2, 3, 4

## EXPLORING THE UNIVERSE

A slide presentation takes participants on a tour of the universe. Greek and Native American legends add to the program. Can be combined with stargazing to provide a highlight to this program. See page 17. Projects or crafts are available.

**Who:** 3rd through college

**Time:** 1 – 1.5 hours

**SLS:** 12F, 1a, 1b, 2a, 2b, 2c, 3b, 3c, 4a, 4b, 5a, 13A, 4c, 13B, 2b, 3b, 3c

# HISTORY

## NATIVE AMERICAN SKY LEGENDS

The first people in North America had many legends about the beginning of their world. Students will enjoy this interactive storytelling session as they learn about American Indian traditions and the night sky.

**Who:** P through 5th grade

**Time:** 30 min. – 45 min.

**SLS:** 4AEC, 12AECb, 12FEC, 18AEC, 2EKa, 4AKa & b, 12FK, 16AKb, 17CK, 12F, 1b, 2c, 16A, 1a, 1c, 16E, 1(W), 2a(W), 4a(W), 18A, 2.

## ONE ROOM SCHOOL

What was school like in the 19th century? Learn about one-room schools, teachers' duties, lessons, and student life with this interactive presentation.

**Who:** K through 5th grade

**Time:** 45 min. – 1 hour

**SLS:** 6AKa & b, 14AKb, 16AKb, 17DK, 16A, 1a, 1b, 1c, 16B, 1a(us), 1b(us), 16C, 1a(w), 4b(us), 16D, 2b(us), 2(w), 3a(us), 3b(us) 16E, 2b(us), 3b(us)

## PLAYTIMES PAST

What kinds of toys did children have in the 1800s and what games did they play? Children will discover the fun of old fashioned pastimes during this interactive presentation.

**Who:** K through 5th grade

**Time:** 45 min. – 1 hour

**SLS:** 14Kb, 16AKb, 9AKa & d, 16A, 1a, 1b, 1c, 16D, 2(w), 3b(us), 18A, 1, 2, 3, 19A, 1, 2, 3, 19 B1, 2, 3, 19C, 1, 2, 3

## NATIVE AMERICAN LIFE WAYS

What was life like for the Native Americans who inhabited Illinois? What natural resources were available and how did they use them? Take a trip back to a different time and culture.

**Who:** K through 12th grade

**Time:** 45 min. – 1 hour

**SLS:** 15BK, 16AKb, 17CK, 17DK, 12B, 1a, 1b, 2a, 2b, 15D, 1b, 2a, 15E, 4b, 16A, 1a, 1b, 1c, 16C, 1a(US), 1a(W), 1b(W), 3a(US), 3b(W), 3c(W), 4a(US), 4b(US), 16D, 2a(US), 2(W), 3(W), 4(W), 16E, 1(US)

## COLONIAL LIFE – MISS MARY MATTIE'S "POCKET"

During the Colonial Period women wore "pockets" under their dresses. Enjoy this living history portrayal of "Miss Mary Mattie" and find out what is in her "pocket". Everyone will enjoy this glimpse back to the time of the birth of our nation. Can be tied to a study of George Washington.

**Who:** Second through 12th grade

**SLS:** 16AKb, 16A, 1a, 1c, 3c, 16B, 2a(us), 2b (us), 3a(us), 16C, 3a(us), 16D, 2b(us), 3a(us), 3b(us)

## THE FRENCH CONNECTION - THE FRENCH IN EARLY ILLINOIS

Students will learn about this often overlooked, but very interesting period of Illinois Colonial history. Clothing, artifacts and demonstrations will make history come alive as we explore the French relationship with Native Americans, French Colonial customs, occupations and life styles.

**Who:** 2nd through 12th grade

**SLS:** 16A, 1a, 1c, 3c, 4b, 5b, 16B, 1a(us), 3d(w), 16C, 1a(us), 1a(w), 1b(w), 1a(us), 3a(us) 4a(us) 16D, 2a(us), 2(w), 16E, 2c(us) 3a(us), 17A, 1b, 2b

## QUILTS THROUGH THE YEARS

Children learn the history of quilts and their importance in daily life through sample quilts and the stories they tell. Hands-on materials available for small groups. Can be adapted to other grade levels.

**Who:** 3rd through 6th grade

**Time:** 45 in. – 1 hour

**SLS:** 16D, 2b, 16D, 2(w), 18A, 2, 3

## THE TRAVELER'S TRUNK

What was it like to be a traveler in the old days of stage coaches and steam trains? Learn how to pack light and make do.

**Who:** 3rd through 12th grade

**Time:** 45 min. – 1 hour

**SLS:** 16A, 1a, 1b, 1c, 16B, 1a(us), 1b(us), 16C, 1a(w), 4b(us), 16D, 2b(us), 2(w), 3a(us), 3b(us), 16E, 2b(us), 3b(us)

## TRAPPERS AND TRADERS

Who were the first Europeans to explore and exploit Central Illinois? What were they looking for and how did they interact with the people already living here?

**Who:** 3rd through 12th grade

**Time:** 1 hour

**SLS:** 12A, 2a, 3c, 12B, 2a, 2b, 3a, 3b, 4a, 4b, 5a, 5b, 16B, 2d(us), 2a(w), 16C, 3a(us), 3b(w), 4a(us), 4b(us) 16D, 2a(us), 3a(us), 4(w), 16E, 2a(w), 4a(w)

## GOVERNOR OGLESBY MANSION

The Governor Oglesby Mansion offers special presentations for fifth grade classes in early May. This program includes information about the life of Governor Oglesby, his relationship with Abraham Lincoln and Ulysses S. Grant, and historic Decatur, as well as a tour of the mansion. Special group tours can be arranged. The Mansion is open for public tours the last Sunday afternoon of each month from March through November. To make arrangements for a tour or special presentation call 217-429-9422. The Governor Oglesby Mansion, located at 421 W. William St. in Decatur, is owned by the Macon County Conservation District and operated by Governor Oglesby Mansion, Inc.



# MOBILE NATURE CENTER

The Mobile Nature Center can be scheduled for your school or group. It is ideal for outdoor events, science fairs, scout and community activities. A naturalist will be available to make presentations, and engage participants in hands-on activities.

In Macon County, science fairs, outdoor events, etc. \$30.00 per hour for the first hour. \$25.00 each additional hour.

Out of County for the same event types \$35.00 per hour for the first hour. \$30.00 each additional hour, plus \$.50 per mile round trip. \$10.00 surcharge for trips more than 100 miles round trip.

## TELESCOPES

Make arrangements with our staff for an astronomy demonstration using our 8" Celestron and 6" telescopes. Daytime viewing of sun spots or evening viewing of stars and planets is offered at Rock Springs Nature Center, other conservation areas, your school, or a meeting place. Can be combined with Exploring the Universe or the Star Lab for an additional fee.



Fees for astronomy demonstration:

Macon County Schools \$30.00 per class for up to 30 students, \$25.00 for each additional class that day.

Out of County \$35.00 per class for up to 30, \$30.00 for each additional class that day. An additional \$.50 per mile for travel, \$10.00 surcharge for more than 100 miles round trip.

## STAR LAB FACILITATION

Our trained staff will come to your school to facilitate the Star Lab Mobile Planetarium. Let us take care of all the details of rental, set-up and presentations. Presentations offered by our staff include:

- The Night Sky
- Constellations and Greek Legends
- Native American Legends

All presentations are tailored for the age and ability level and vary in length from 20 to 45 minutes.

Fees for Star Lab Facilitation: Macon County Schools \$125.00 per day

Out of County Schools \$150.00 per day. An additional \$.50 per mile for travel, \$10.00 surcharge for more than 100 miles roundtrip.

# MUSEUM IN A BOX

These interactive teaching kits, which were assembled by conservation district education staff, are available to educators in the Macon County Area. The kits are correlated with the Illinois State Learning Standards and developed for preschool through 12th grade. They are listed by age-appropriateness with youngest first. Call to reserve. Must be picked up at Rock Springs Nature Center.

Fees for the Museum in a Box:

Macon County Schools \$5.00 for 2 weeks, \$2.00 per day late fee

Out of County Schools \$10.00 for 2 weeks, \$2.00 per day late fee

## NATURE

### MUSICAL INSECTS – STORY TELLING KIT

Insects make many interesting sounds. Explore the noisy world of insects through story books, crafts and activities.

**Who:** P through K

**SLS:** 1BEC, 1CEC, 4AEC, 11AEC, 25AEC, 1AK, 1BK, 1C, 4AK, 11AK, 12AK, 12BK, 12CK

### RHYTHM AND RECYCLE

This kit includes a 40 piece rhythm set for the students, information on forming a classroom rhythm band as well as making instruments from recycled materials. Projects on the science of sound are also included.

**Who:** P through 3rd grade

**SLS:** 12EEC, 19AEC, 19CEC, 25AEC, 11AK, 12EK, 13BK, 19AK, 26AK, 17C., 25A, 26A, 26B

### WEATHER OR NOT

Help younger children learn about the seasons and older students learn about fog, tornados, blizzards and other weather phenomena. This kit includes insta-sno, adorable weather puppets, weather kits, books, posters, and more!

**Who:** P through 8th grade

**SLS:** BEC, 1CEC, 4AEC, 5AEC, 5bEC, 11AEC, 12AEC, 12AEC, 12BEC, 12FEC, 11AK, 12AK, 12BK, 12FK, 16AK, 16BK, 17AK, 17CK, 12A, 12E, 13B, 17C

## OH DEER!

The white tailed deer is Illinois' state mammal. This kit, containing books, lesson plans, a deer pelt, and much more is sure to be a hit with all ages. Use it to augment the study of state symbols, spur a discussion of hunting or help preschoolers learn the difference between white tailed deer and reindeer.

**Who:** P through 12th grade

**SLS:** BEC, 1CEC, 4AEC, 5AEC, 5bEC, 11AEC, 12AEC, 12AEC, 12BEC, 12FEC, 11AK, 12AK, 12BK, 12FK, 16AK, 16BK, 17AK, 17CK, 12A, 12B, 13B.



## TALKIN' TURKEY

This kit is full of items and information from the National Wild Turkey Foundation, plus replica skull, track, scat, egg and other fun materials. It will be a great addition to a unit at Thanksgiving or anytime.

**Who:** P through 12th grade

**SLS:** BEC, 1CEC, 4AEC, 5AEC, 5BE, 5CEC, 11AEC, 12AEC, 12BEC, 12FEC, 11AK, 12AK, 12BK, 12FK, 16AK, 16BK, 17AK, 17CK, 12A, 12B, 13B, 16E, 17C

## NATURE'S MUSIC

The sounds of nature are all around us, but sometimes we forget to listen. This kit will help students learn to stop and listen to the music of the birds, frogs, rain and the great outdoors.

**Who:** K through 4th grade (includes some materials through high school level)

**SLS:** 11AK, 12CK, 12DK, 12FK, 26AK, 26A

## DINOSAURS

Every kid loves dinosaurs. This kit contains interactive materials, curriculum materials, and lots of fun stuff for the dino fan. Sure to be a hit.

**Who:** K through 4th grade

**SLS:** 12A, 12B, 12E, 13B

## INSECTS

Loads of information and fun activities. This kit includes lesson plans, games, Magic School Bus and other videos, posters, real specimens plus collecting equipment.

**Who:** K through 6th grade

**SLS:** 12A, 12B, 13B

## REPTILES

Learn about common and uncommon reptiles with this kit chock full of books, videos, posters, games, activity ideas and more.

**Who:** K through 6th grade

**SLS:** 12A, 12B, 13B

## ASTRONOMY

Includes background materials, lesson plans, videos, posters, games, books, websites and much more. Perfect supplement for a unit or enrichment materials.

**Who:** K through 12th grade

**SLS:** 12F

## BATS

Learn about bats in Macon County and beyond. Kit includes videos, slides, skulls, skeletons, books, lesson plans, activities, posters.

**Who:** K through 12th grade

**SLS:** 12A, 12B, 13B

## BIRDS OF PREY

This kit contains materials relating to hawks and owls with emphasis on local species. Posters, activities, lesson plans, skulls, and much more included.

**Who:** K through 12th grade

**SLS:** 12A, 12B, 13B



## EARTHWORMS

Earthworms can do more than aerate the soil. Discover more about these creatures with lesson plans, activities, books, posters.

**Who:** K through 12th grade

**SLS:** 12A, 12B, 13B, 16A

## FOSSILS

Kit includes video lab for middle and high school. Also has “bucket of fossils” which will delight all ages. Materials to “make a fossil” included, along with books, lesson plans and background materials.

**Who:** K through 12th grade

**SLS:** 12A, 12B, 12E, 13B , 16A

## FROGS AND TOADS

Full of facts about frogs and toads. Lesson plans, posters, books, videos and CDs help the student discover more about these amphibians.

**Who:** K through 12th grade

**SLS:** 12A, 12B, 13B

## OUTDOOR SURVIVAL SKILLS

If you were stranded in the wilderness, would you know how to survive? Put your survival tricks to the test or learn some techniques with this kit filled with guides, animal ID, and more! Also tips for successful camping, and hiking outings.

**Who:** K through 12th grade

**SLS:** 2A, 12B, 12E, 19C, 22A, 22C, 24B

## SKELETONS

Learn more about the vertebrates and the main characteristic they all share – a skeleton, with our “box full of bones.” Contains a representative skeleton from each class of vertebrates plus lots of books, videos, lesson plans and activity ideas.

**Who:** K through 12th grade

**SLS:** 12A, 12B, 13B

## TREES

Trees are so important to our environment. This kit helps students learn to identify common trees with seeds, wood, and leaves. It also helps the younger students understand the importance of trees to our lives. Contains lesson plans, books, specimens and posters.

**Who:** K through 12th grade

**SLS:** 12A, 12B, 13B, 16E

## WETLANDS, PONDS AND STREAMS

Fresh water aquatic environments are often misunderstood. Help your students learn about the importance of this varied habitat with videos, books, activities, posters, test kits and lesson plans.

**Who:** K through 12th grade

**SLS:** 12A, 12B, 13B, 16E



## PRAIRIE

Learn more about this important, but vanishing biome. Illinois is nicknamed “The Prairie State” for a reason. Kit includes lesson plans, videos, CDs, prairie plant specimens, skulls, scat and egg replicas of prairie birds.

**Who:** 3rd through 12th grade

**SLS:** 12A, 12B, 13B, 16E, 17B, 17C

# HISTORY

## TRAINS, CHUGGING ALONG – STORY TELLING KIT

Trains are a favorite of many children. Story books, CDs, and activities will help children learn more about trains and their interesting sounds.

**Who:** P through K

**SLS:** 1BEC, 1CEC, 4AEC, 11AEC, 25 AEC, 1AK, 1BK, 4AK, 11AK, 26AK

## TRAIN SONGS

The railroads were very important in Macon County's history. They encouraged immigration, were responsible for the establishment of many of the small towns, and made Decatur a major grain processing center. This kit will help the student learn about that history with books, CDs, and activities.

**Who:** P through 8th grade (includes some materials for High School level)

**SLS:** 1BEC, 1CEC, 4AEC, 11AEC, 25 AEC, 1AK, 1BK, 4AK, 11AK, 26AK, 15A, 16A, 16C, 16E, 17C, 17D

## 1860s FARM LIFE

Students will catch a glimpse of life in rural Central Illinois. You'll gain in-depth perspectives through artifacts, activities and selected topics that demonstrate the experiences of men, women, and children that lived the 19th Century farming lifestyle.

**Who:** K through 6th grade

**SLS:** 13A, 16A, 16D, 16E

## NATIVE AMERICAN LIFE-WAYS

The Native Americans in Illinois had their own way of life attuned to the environment. This kit helps students understand and appreciate the unique aspects of Illinois tribes through artifacts and furs from the animals they hunted, the crops they grew, and legends from the Midwest.

**Who:** K through 6th grade

**SLS:** 12B, 15D, 16A, 16C

## CIVIL WAR SOLDIER

The Civil War Museum in a Box provides an in depth look into the life of the common American Civil War soldier. Students gain this experience through artifacts, activities, and selected topics that focus on food, daily living, and the hardships that soldiers faced.

**Who:** 3rd through 12th grade

**SLS:** 16B, 16D

# LENDING TRUNKS

Illinois Department of Natural Resources' Lending Trunks are available at the Rock Springs Nature Center. These kits are for use by educators and are free of charge. Call to reserve. Kits must be picked up at Rock Springs Nature Center.

## ILLINOIS INSECTS AND SPIDERS TRUNK

Insects and spiders fascinate students. Encourage them to learn more about these organisms by using the resources in this kit. Books, DVDs, student activities, field guides, posters, insect/spider observation equipment and a video are just some of the items included.

**Who:** P through 6th grade

**SLS:** 12A, 12B, 13B

## PEOPLE AND ANIMALS FROM ILLINOIS' PAST TRUNK

Prehistoric mammals, extirpated mammals and Native Americans' relationship with nature are the subjects of this resource trunk. Contents include: mammoth and mastodon tooth replicas, Native American games, activities, posters, replica pottery, a video, reference and activity books.

**Who:** P through 6th grade

**SLS:** 12A, 12B, 16A, 16E, 17C, 18A

## ILLINOIS BIRDS RESOURCE TRUNK

Stop and listen to one of nature's instruments with this kit filled with field guides, books, track and egg replicas, DVDs, videos, CD's with bird songs and calls, and even bird replicas that sing!

**Who:** P through 8th grade

**SLS:** 1BEC, 1CEC, 4AEC, 5AEC, 5BE, 5CEC, 11AEC, 12AEC, 12BEC, 12FEC, 11AK, 12AK, 12BK, 12FK, 1C, 4B, 5A, 5B, 5C, 6C, 6C, 10A, 12A, 12B, 13B, 16E, 17A, 17C, 18A

## ILLINOIS WILD MAMMALS TRUNK

Discover Illinois mammals with this kit! Pelts, skulls, replica tracks and scat and many other interesting items are sure to be a hit with your students.

**Who:** P through 12th grade

**SLS:** 12A, 12B, 13B, 16E

## ILLINOIS' STATE SYMBOLS RESOURCE TRUNK

Are you teaching about Illinois? Then this is the resource kit for you. Photos, replicas, actual samples, activity book, information and other items are included for your use. There's an Illinois Facts section, too.

**Who:** K through 6th grade

**SLS:** 11AK, 12AK, 12BK, 12FK, 16AK, 16BK, 17AK, 17CK, 12A, 12B, 13B.

## ILLINOIS PRAIRIE RESOURCE TRUNK

Are you teaching about prairies or the people who inhabited the prairies? Then borrow the Illinois Prairies trunk! Field guides, activity books, reference manuals, bison artifacts, numerous lessons, CD-ROMs and other items are included for your use.

**Who:** K through 8th grade

**SLS:** 12A, 12B, 13B, 16E, 17B, 17C

## ILLINOIS TREES RESOURCE TRUNK

Check out this kit! It is jam-packed with books, posters, “tree cookies”, lumber samples, videos, and more!

**Who:** K through 10th grade

**SLS:** 1BEC, 1CEC, 4AEC, 5AEC, 5BE, 5CEC, 11AEC, 12AEC, 12BEC, 12FEC, 11AK, 12AK, 12BK, 12FK, 1A, 3C, 4A, 4B, 5C, 11A, 12A, 12B, 13A, 13B, 16E, 17A

## ILLINOIS’ INVASIVE SPECIES RESOURCE TRUNK

Invasive species are a daily topic in the news. What are they? How did they get here? What problems do they cause? What can we do about them? These questions and more can be answered by using the new Illinois’ Invasive Species resources trunk! Contents include student activities, background information, images, lessons, field guides, specimens and other items.

**Who:** 3rd through 12th grade

**SLS:** 12A, 12B, 16E, 17A, 17B, 17C, 17D.

## ILLINOIS FOSSILS RESOURCE TRUNK

This kit emphasizes Illinois fossils. Includes fossil molds, fossil hunt kits, reference collection, field guides, posters, activities, and a video.

**Who:** 4th through 8th grade

**SLS:** 12A, 12B, 12E, 13B

## AQUATIC ILLINOIS RESOURCE TRUNK

Discover the secret life of water with this kit. Children will explore the biological, historical, chemical, and other aspects of water through books, posters, water sampling tools, videos, DVD’s and activities!

**Who:** 5th through 9th grade

**SLS:** 1BEC, 1CEC, 4AEC, 5AEC, 5BE, 5CEC, 11AEC, 12AEC, 12BEC, 12FEC, 11AK, 12AK, 12BK, 12FK, 12A, 12B, 12E, 12F, 13B, 16A, 16E, 17A, 17B, 17C, 17D

## FIELD TRIP PACK

This backpack includes many items to assist your early childhood students as they explore nature. Hands-on equipment will encourage self-initiated learning. Suggestions for teachers on how to incorporate natural-resources activities into your lessons are also included.

**Suggested grades:** prek through 3rd.

# GRANTS & WORKSHOPS

## AUDUBON GRANTS

The Decatur Audubon Society offers grants to teachers for environmental projects. If you have a project in mind that you would like to tell the Audubon Society about, please call 217-423-7708 for more information. All teachers, in Macon County and beyond, are encouraged to apply for grants.

## TEACHER WORKSHOPS

TEACHER'S WORKSHOPS FOR CONTINUING PROFESSIONAL DEVELOPMENT UNITS ARE OFFERED THROUGHOUT THE YEAR. FALL WORKSHOPS ARE:

### OCTOBER 13, 4PM TO 8PM

Migration and Hibernation

4 CPDUs- Fee \$15.00

### NOVEMBER 3, 4PM TO 8PM

Economic Impact of Illinois Natural Resources

4 CPDUs- Fee \$15.00

WORKSHOPS WILL CONTINUE TO BE SCHEDULED THROUGHOUT THE YEAR. THEY ARE HELD AT ROCK SPRINGS NATURE CENTER UNLESS OTHERWISE NOTED. CHECK OUR WEBSITE FOR NEW LISTINGS. CALL 217-423-7708 OR CHECK OUR WEBSITE, [WWW.MACONCOUNTYCONSERVATION.ORG](http://WWW.MACONCOUNTYCONSERVATION.ORG) TO VERIFY DATES AND TIMES AND TO REGISTER FOR WORKSHOPS.

## IN-SERVICE WORKSHOPS

Our staff is available to come to your school to work with the faculty during in-service days Teachers can earn CPDUs. Some topics which might be of interest are:

**EVERYTHING GREEN** - help your school and your students join the "green movement"

**NO CHILD LEFT INSIDE** - learn about new evidence that "nature play" is important to a child's physical, mental and spiritual development. This initiative complements the goals of better health through more physical activity.

**LOCAL HISTORY** - People are more connected to their community when they know a little of the history. Help your students feel that "sense of place".

**LOCAL FLORA AND FAUNA** - People care more about plants and animals if they know the names of them. Help your students learn some of the common ones in your community.

**LOCAL GEOLOGY** - Illinois has a very interesting geologic past. Knowing what to look for makes our state a more interesting place to live.